

Other recycling and reuse resources

for Vashon Island



Curbside recycling

If you are new to Vashon Island or to recycling, sign up for curbside collection service by contacting Waste Connections at 1-888-806-7048. For more information, visit www.murreysdisposal.com.

Electronics

Recycle monitors, computers, and televisions at no charge. For drop-off locations or more information, visit www.ecyclewashington.org or call 1-800-RECYCLE.

Household hazardous wastes

These are products such as paint thinner and pesticides that contain toxic, flammable, reactive, or corrosive ingredients. Most of these items can be taken to the Household Hazardous Wastemobile or to an off-island household hazardous waste collection site. For a list of locations and information about restrictions, visit www.lhwmp.org or call the Household Hazards Line at 206-296-4692, Mon. - Fri. from 9 a.m. to 4:30 p.m.

Vashon FreeCycle

Find new homes for things you no longer use. Look for items that you need. Visit groups.yahoo.com/group/vashonfreecycle.

Vashon residential recycling collection event

At this annual event provided by King County, drop off recyclable materials that are not collected curbside. For information, including details about what is accepted, visit your.kingcounty.gov/solidwaste/garbage-recycling/events.asp.

Vashon Tool Library

Join this volunteer-run organization to save money and conserve resources. Borrow tools from specialty saws to electric mowers and much more. Visit vashontools.org.

What do I do with...?

From packing peanuts to paint, this King County website directory contains listings of businesses and organizations that accept unwanted items for reuse, recycling, or proper disposal. Visit www.kingcounty.gov/WhatDoIWith.

Zero Waste Vashon (ZWV)

ZWV is a group of Vashon Island residents working in partnership with King County to make Vashon Island a model green community by finding practical ways to recycle the island's waste stream into useful products. Visit zerowastevashon.org.



Vashon businesses and organizations

King County provides this list as a courtesy to the public and does not endorse or guarantee the quality of the services provided. Call these listings to obtain the most current information.

Items accepted	Name	Address	Telephone	Notes
Batteries, used motor oil	Vashon Ace Service Center	9715 SW 174th	463-4019	All used batteries (AAA, button, car batteries), uncontaminated used motor oil (up to 5 gallons per day)
Books	Vashon Library	17210 Vashon Hwy SW	463-2069	Gently used condition only
Clothing, household items	Granny's Attic	17707 SW 100th Ave. SW	463-3161	Gently used condition only
Plastics bags	IGA Market fresh	17639 100th Ave. SW	463-9725	Only dry, empty retail plastic bags; see container in front of store

Secure Your Load For Safer Roads!



It's the Law!

King County Department of Natural Resources and Parks Solid Waste Division

Waste Prevention • Resource Recovery • Waste Disposal

Printed on recycled paper

This information is subject to change.

For updates, please contact King County Solid Waste Division: www.kingcounty.gov/solidwaste 206-477-4466, TTY Relay: 711 Alternate formats available.

Vashon Recycling & Transfer Station

King County Department of Natural Resources and Parks Solid Waste Division

Recycling Guide



Location – 18900 Westside Hwy. SW, Vashon 98070

Hours – Mon, Wed, Fri, Sat & Sun: 9am – 5pm, Closed: Tues & Thurs

Improved, expanded recycling services

Ask a staff member if you need help

Compactors

Place cardboard, paper, bottles, cans, and other containers together in compactors. **Look inside for information about what recyclable materials are accepted in compactors.**

- To decrease trips from Vashon to the Seattle recycling facility, two recycling compactors were set up in August 2015.
- Volume of materials hauled on each truck load is greater. Benefits include reduced carbon emissions and decreased costs per ton.

Mercury-containing light bulbs and tubes: No fees!



Yard and food waste pilot program: October 2015 – September 2016

- Participation by Vashon residents and businesses will help determine if a permanent yard and food waste collection program is feasible on Vashon Island.
- Fees apply. Check in at scale house. The fees for yard and food waste are lower than the garbage fees.
- Yard waste includes: Branches, brush, grass clippings, leaves, twigs, weeds
- Food waste includes: Fruit and vegetable scraps, breads, pastas, bones, fish, meat, poultry, cheese, yogurt, egg shells, coffee grounds, paper coffee filters, tea bags
- The following materials will NOT be accepted with yard and food waste: Glass, metal, plastic, compostable utensils, or food-soiled paper such as pizza boxes, take-out containers, or paper napkins, towels or plates.
- Waste prevention is best. For tips on how to reduce food waste visit King County's Food: Too Good to Waste website – your.kingcounty.gov/solidwaste/wasteprevention/too-good-to-waste.asp.



For more information, call King County Solid Waste Division at 206-477-4466 or visit your.kingcounty.gov/solidwaste/vashon

RECYCLE at Vashon Recycling & Transfer Station

Place all these materials together in blue compactors

Materials must be clean (no food), dry, and empty (no liquids)

Remove recyclables from bags and boxes, except for shredded paper which must be securely tied in a clear plastic bag.



These materials are collected in separate containers or areas.
Look for signs near each container or area.

Major appliances



Fees apply. Check in at scale house.

Mercury-containing light bulbs and tubes



CFLs, fluorescent tubes up to 8 feet in length, HID bulbs
Limit: 10 bulbs/tubes per person per day

Scrap metal



Materials with **50 percent** or more metal

Textiles



Clothing, shoes, linens
Torn, worn, stained textiles accepted.

Yard and food waste

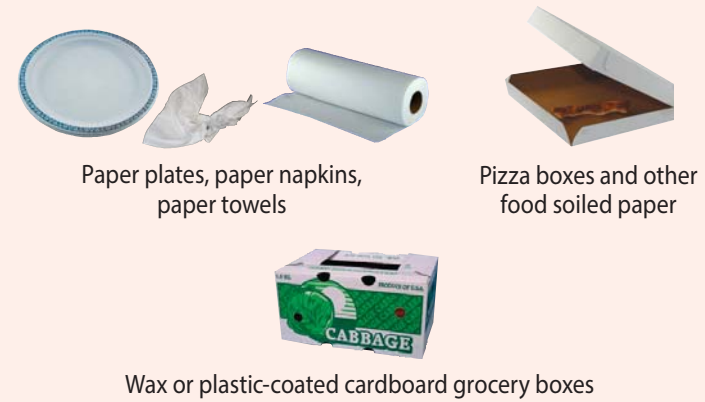


Fees apply. Check in at scale house.

NOT ACCEPTED

When in doubt, call King County Solid Waste Division at 206-477-4466

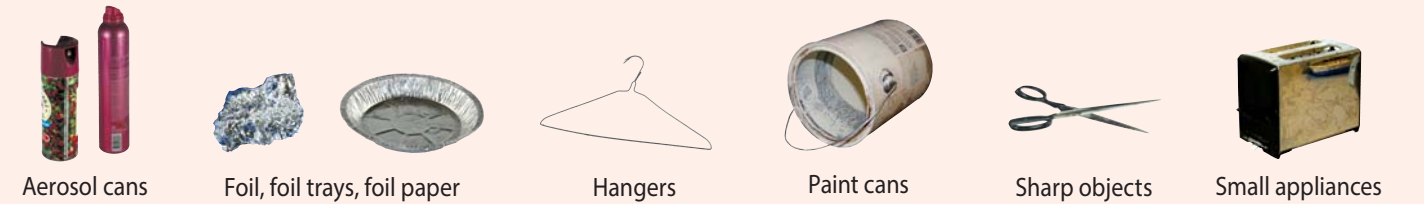
Types of paper NOT accepted for recycling



Types of glass NOT accepted for recycling



Types of metal NOT accepted for recycling



Types of plastic NOT accepted for recycling

